

180° Angular Type Air Gripper Cam Type

MHY2 Series

ø10, ø16, ø20, ø25

How to Order

MHY2 - 16 D 2 - M9BW

Bore size

10	10 mm
16	16 mm
20	20 mm
25	25 mm

Action

D	Double acting
---	---------------

Number of auto switches

Nil	2 pcs.
S	1 pc.
n	n pc.

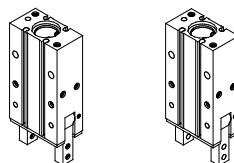
Auto switch

Nil	Without auto switch (Built-in magnet)
-----	---------------------------------------

For the applicable auto switch model, refer to the table below.

Finger option

Nil: Standard tapped mounting
2: Through-holes in opening/closing direction



Applicable Auto Switches

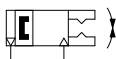
Type	Electrical entry	Indicator light	Wiring (Output)	Load volta		Auto switch model	
				DC	AC	Perpendicular	In-line
Solid state auto switch	Grommet	Yes	3-wire (NPN)	5 V,	—	M9NV	M9N
			3-wire (PNP)	12 V		F8N	—
			2-wire	12 V		M9PV	M9P
						F8P	—
						M9BV	M9B
						F8B	—

* Lead wire length 3 meter.



Symbol

Double acting: External grip



Specifications

Fluid	Air
Operating pressure	0.1 to 0.6 MPa
Ambient and fluid temperature	-10 to 60°C
Repeatability	±0.2 mm
Max. operating frequency	60 c.p.m.
Lubrication	Not required
Action	Double acting
Auto switch (Option)	Solid state auto switch (3-wire, 2-wire)

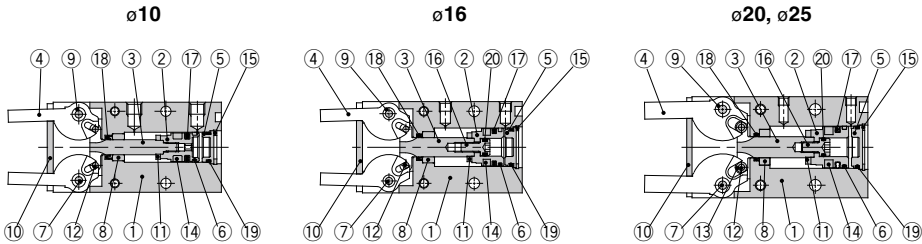
Model

Model	Bore size (mm)	Effective gripping force (1) (N·m)	Opening/Closing angle (Both sides)		Weight (2) (g)
			Opening side	Closing side	
MHY2-10D	10	0.16	180°	-3°	70
MHY2-16D	16	0.54			150
MHY2-20D	20	1.10			320
MHY2-25D	25	2.28			560

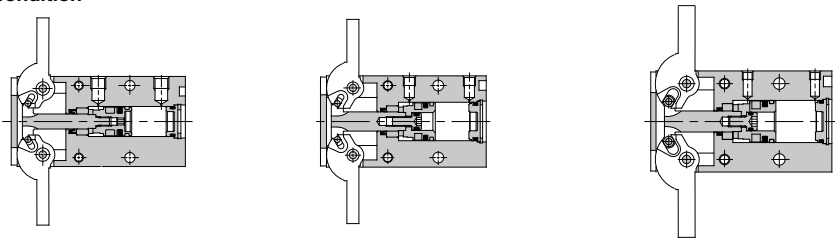
Note 1) At the pressure of 0.5 MPa

Note 2) Except auto switch

Closed condition



Open condition



Component Parts

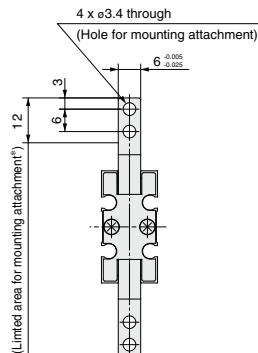
No.	Description	Material	Note
1	Body	Aluminum alloy	Hard anodized
2	Piston	ø10: Stainless steel ø16 to 25: Aluminum alloy	ø16 to 25: Chromated
3	Joint	Stainless steel	Heat treated
4	Finger	Stainless steel	Heat treated
5	Cap	Resin	
6	Wear ring	Resin	
7	Shaft	Stainless steel	Nitriding
8	Bushing A	Sintered alloy steel	
9	Bushing B	Sintered alloy steel	
10	End plate	Stainless steel	

No.	Description	Material	Note
11	Bumper	Urethane rubber	
12	Needle roller	High carbon chrome bearing steel	
13	Joint roller	Carbon steel	Nitriding
14	Rubber magnet	Synthetic rubber	
15	Type C retaining ring	Carbon steel	Phosphate coated
16	Piston bolt	Stainless steel	
17	Piston seal	NBR	
18	Rod seal	NBR	
19	Gasket	NBR	
20	Gasket	NBR	

MHY2-10D



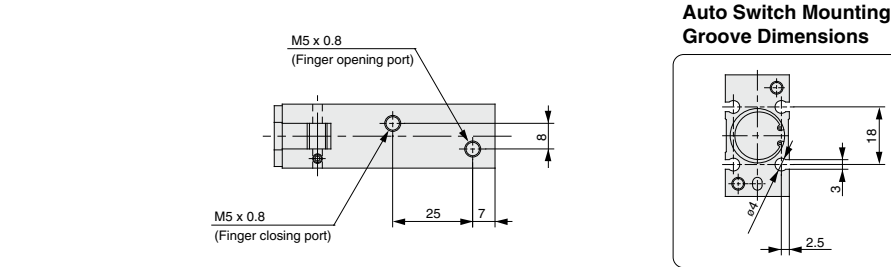
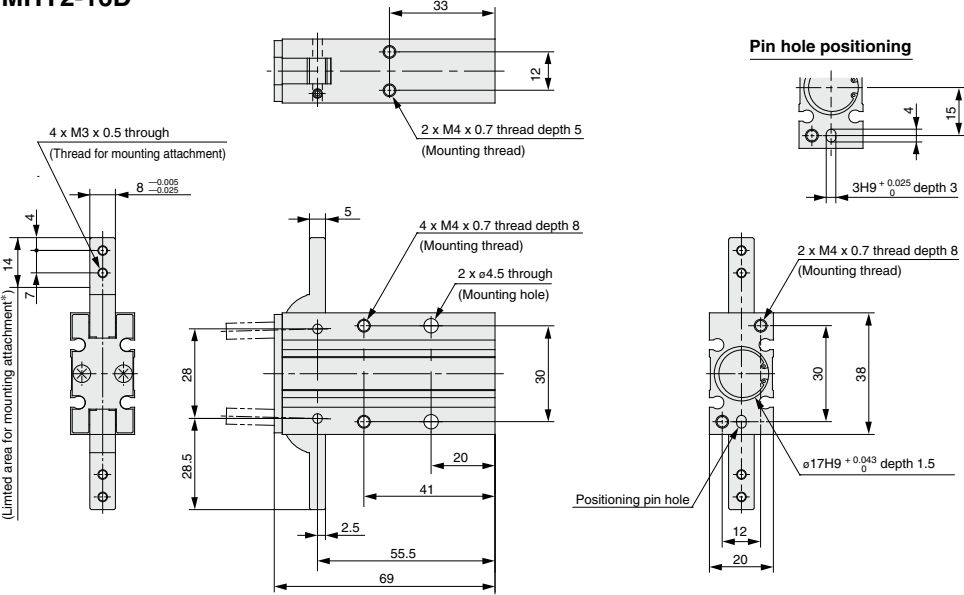
MHY2-10D2
Opening/Closing direction
through-hole type



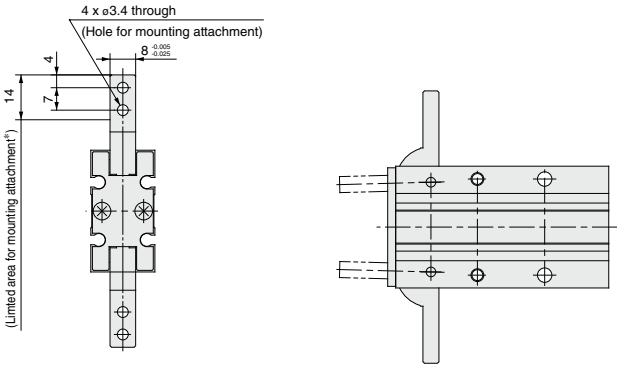
* Do not extend the attachment from limited area for mounting to avoid interference with the attachment or main body.

Dimensions

MHY2-16D

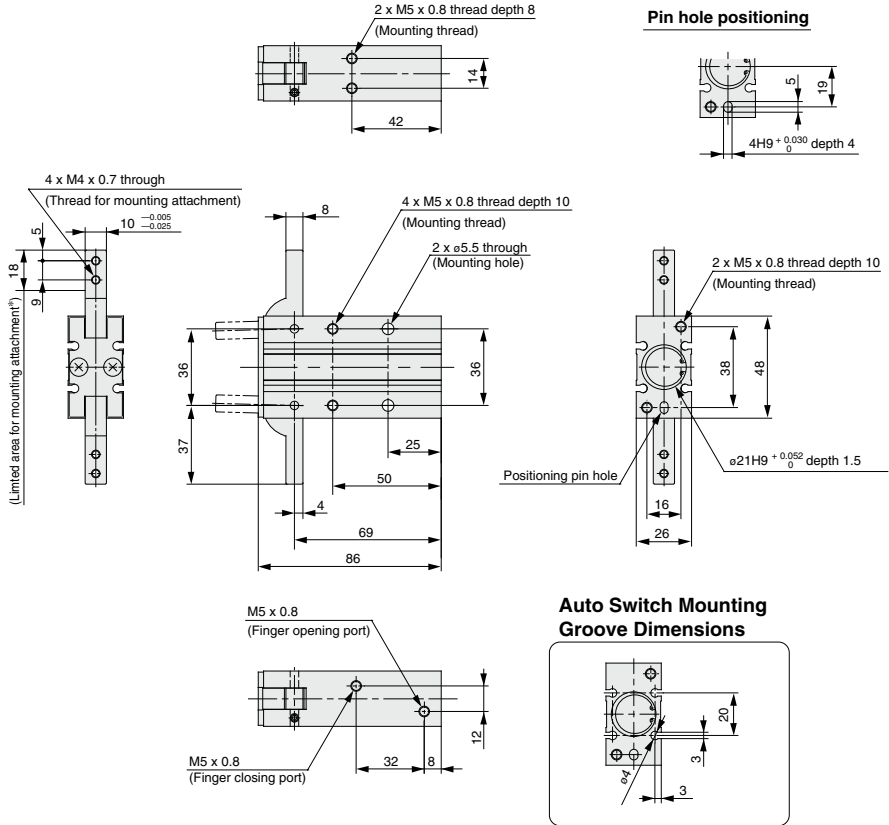


MHY2-16D2
Opening/Closing direction
through-hole type



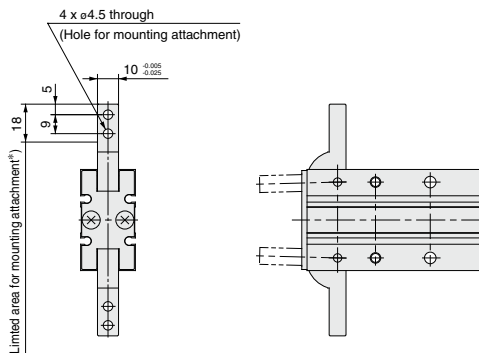
* Do not extend the attachment from limited area for mounting to avoid interference with the attachment or main body.

MHY2-20D



MHY2-20D2

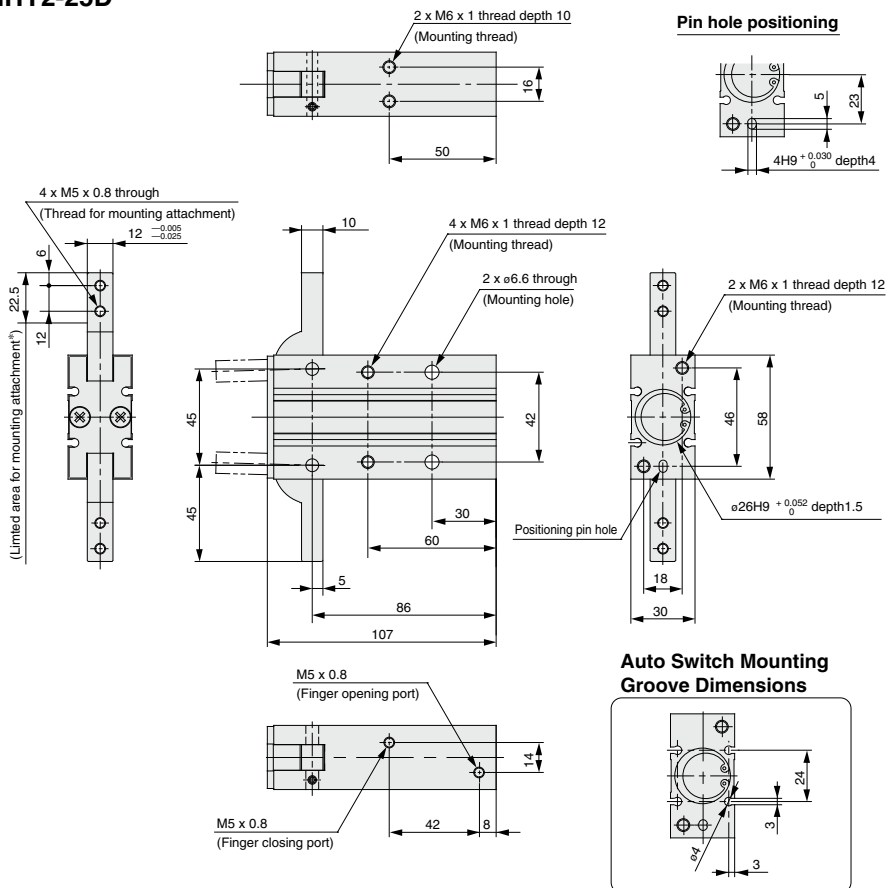
Opening/Closing direction
through-hole type



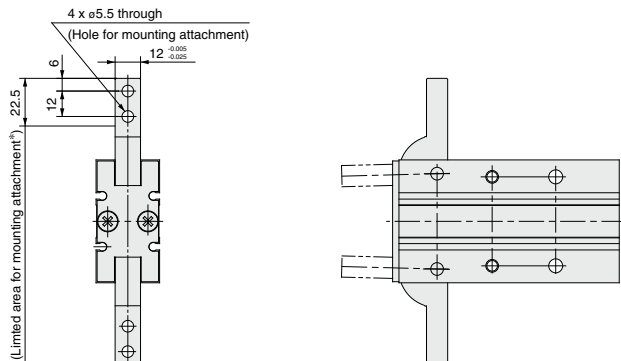
* Do not extend the attachment from limited area for mounting to avoid interference with the attachment or main body.

Dimensions

MHY2-25D



MHY2-25D2 Opening/Closing direction through-hole type



* Do not extend the attachment from limited area for mounting to avoid interference with the attachment or main body.